

Florida Fish and Wildlife Conservation Commission
Schedule of Operations



Managing Agency: FWC South

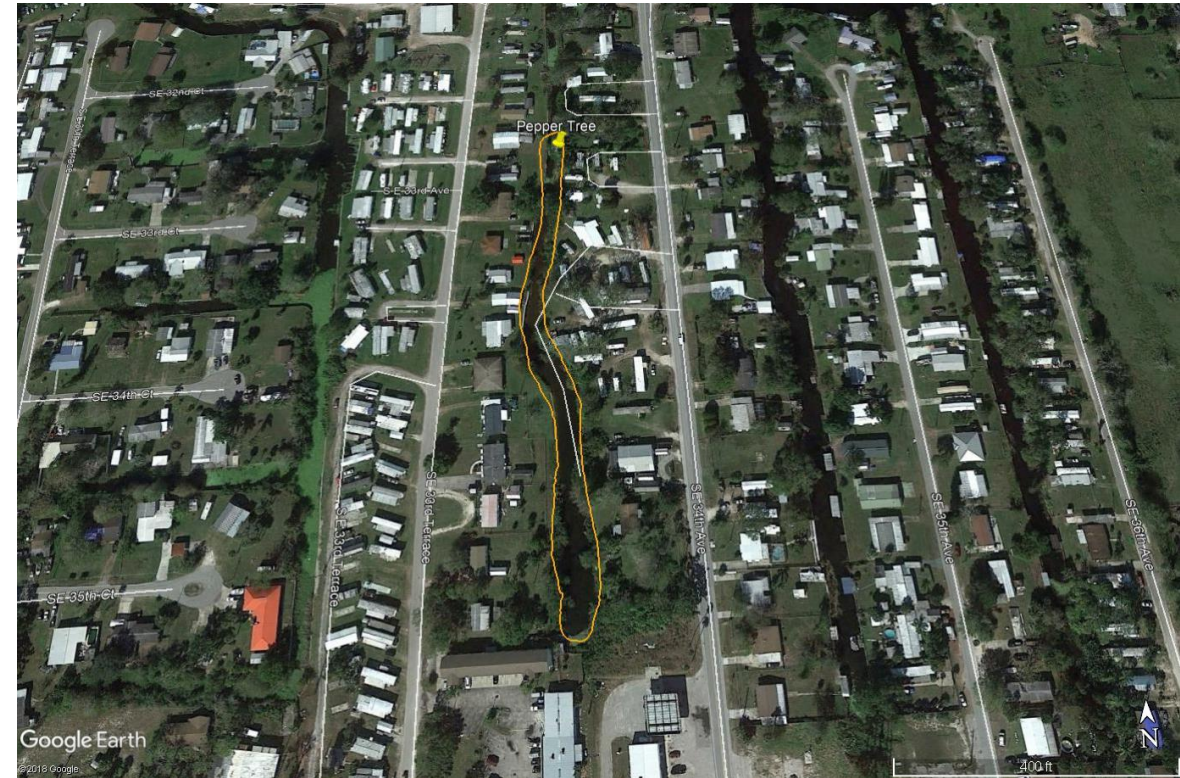
Cooperator: Applied Aquatic Management (SFWMD)

Schedule for the Period of: 5/6/2019 through 5/10/2019

Waterbody	Regional Biologist	WorkArea	Target Plant	Treatment Acreage	Method Of Control	Herbicide Rate	Map
Okeechobee, Lake	Brendon Hession	<p>Taylor Creek: treat residential canals, see PDF for details.</p> <p>Lake Okeechobee: treat floating plants in Pelican Bay, Halifax Banks and The Monkey Box & Harney pond. Details in attached PDF</p> <ul style="list-style-type: none"> •Diquat for Hyacinth in open water or in spatterdock •2,4-D for Hyacinth in cattail and other grasses •Penoxsulam for Hyacinth in Giant bulrush •Diquat for Lettuce in open water •Flumioxazin for lettuce in cattail or Giant bulrush •Lettuce & Hyacinth mixed •Diquat for lettuce & hyacinth in grasses, spatterdock or pennywort •Flumioxazin and Penoxsulam mix when lettuce & hyacinth are together in Giant bulrush •Flumioxazin and 2,4-D mix when lettuce & hyacinth together in cattail 	Floating Plants (Eichhornia and Pistia)	75	2,4-D (liquid); Penoxsulam (liquid); Diquat; Flumioxazin	<p>2,4-D: 2 quarts per acre</p> <p>Diquat: 2 quarts per acre</p> <p>Penoxsulam: 4 oz per acre</p> <p>Flumioxazin: 3 oz per acre</p>	Yes

(R) = Rescheduled from previous

Taylor Creek



Halifax Banks Treatment Plan

Area infested with Water
Hyacinth and Water Lettuce.


90 acres of Lettuce

120 acres of Hyacinth





Halifax Banks
Photos from 4-1-19 Helicopter survey



Water Hyacinth in Halifax Banks area

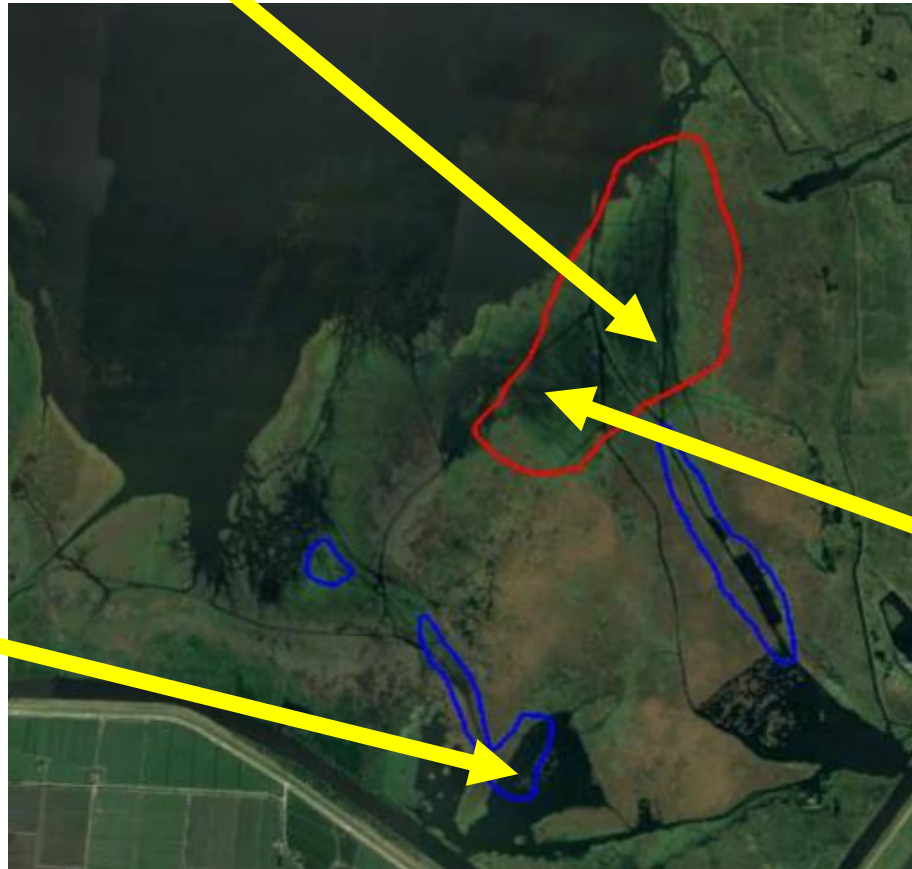
- Water Hyacinth is blooming in this area of the lake pushing out native lilies and Bladderwort and forming large mats.



Aerial Photo points: Left: 2/14/19 Middle: 4/1/19 Right: 4/17/19



Halifax Banks: Red polygon is potential mechanical harvesting site, 120+ acres of Hyacinth and 90+ acres of Lettuce.



Pelican Bay

Area infested with Water
Hyacinth and Water Lettuce.

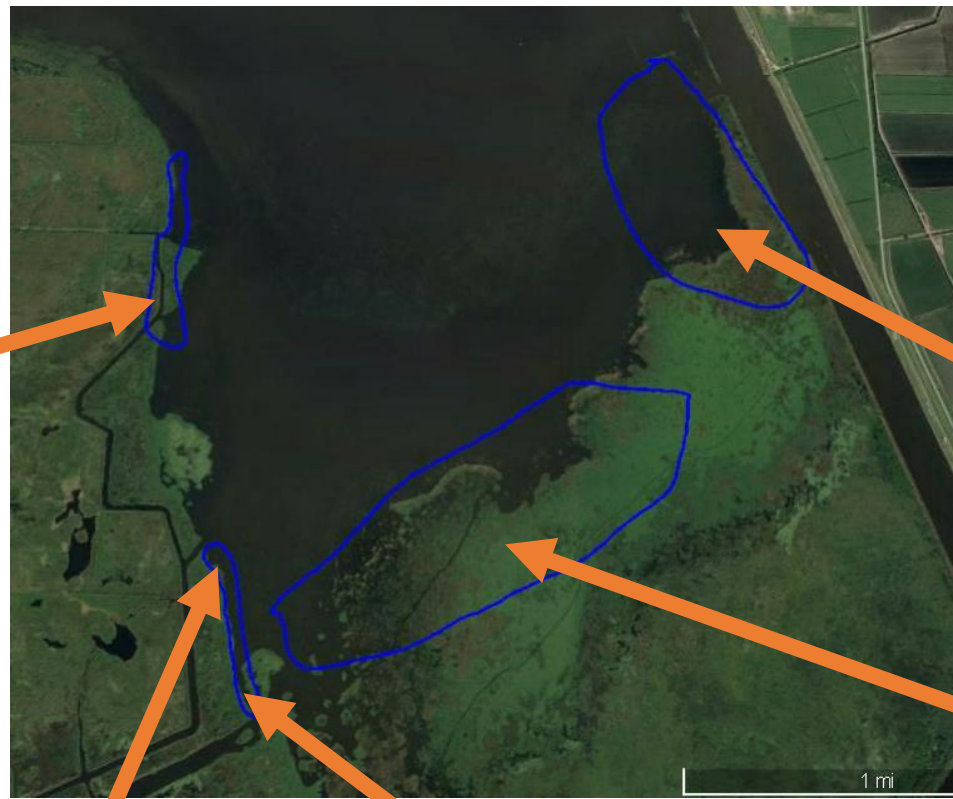
90 acres of Lettuce

200 acres of Hyacinth





Pelican Bay
Photos from 4-1-19 helicopter survey



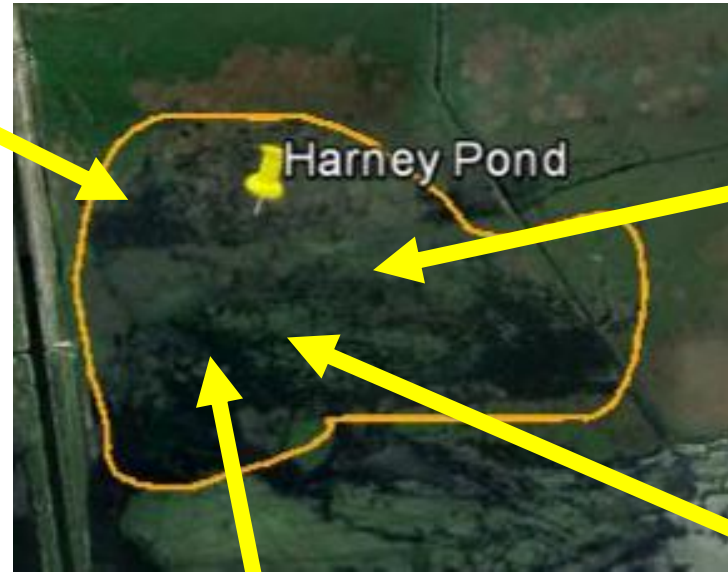
Monkey Box & Harney Pond Treatment Plan

75 acres of floating plants in Harney Pond. 250 acres of floating plants in the Monkey Box area.



Harney Pond





Top left: Hyacinth mat forming around Cattail and other natives. Bottom photos: Hyacinth smothering native grasses



Monkey Box





Top Right: Hyacinth choking out native Bulrush and shading out new growth. Bottom Left: Hyacinth forming mats and filling in around Bulrush. Bottom Right: Hyacinth and Lettuce forming mats, pushing into Cattail and Bulrush as well as shading both emergent and submerged vegetation during low water period. This time of year is most conducive to growth of these desirable natives which is being effected.





Top left: Shorelines in the area have 2-5 meter band of Hyacinth. Top Right: Mix of Hyacinth and Lettuce forming mat along the vegetation line not allowing native growth. Bottom Left: Due to falling water levels, treating the area may become increasingly difficult

Herbicide directions

- Hyacinth
 - Diquat (2 quarts per acre) for Hyacinth by itself or in spatterdock
 - 2,4-D (2 quarts per acre) for Hyacinth in cattail and other grasses
 - Penoxsulam (4 oz per acre) or Imazamox for Hyacinth in Giant bulrush
- Lettuce
 - Diquat for Lettuce by itself
 - Flumioxazin (3 oz per acre) for lettuce in cattail or Giant bulrush
- Lettuce & Hyacinth mixed
 - Diquat for lettuce & hyacinth in grasses, spatterdock or pennywort
 - Flumioxazin and Penoxsulam mix when lettuce & hyacinth are together in Giant bulrush
 - Flumioxazin and 2,4-D mix when lettuce & hyacinth together in cattail